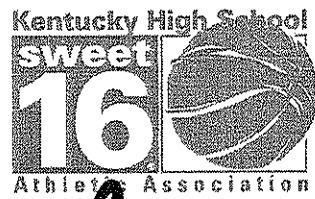
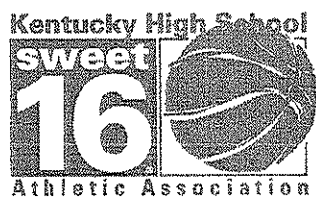
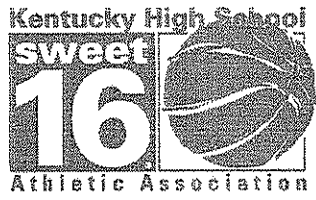
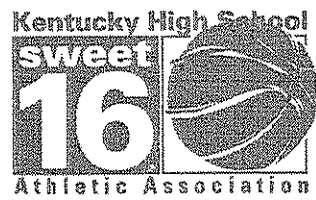
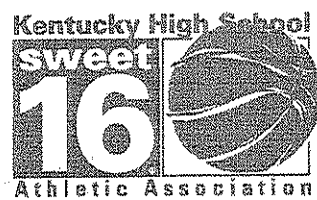
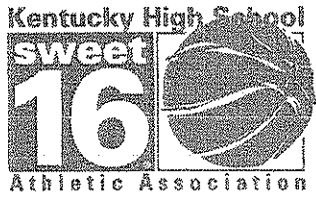
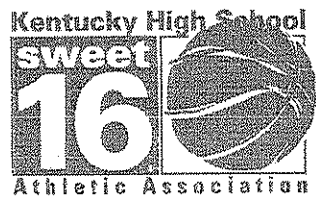


GAME #3



JACKSON Co. v.
MARSHALL Co.

OFFICIAL NCAA BASKETBALL BOX SCORE
Marshall County Lady Marshals vs Jackson County Lady Generals

03/22/2000 7:00 pm
Final Box Score

Arena Girls' Sweet 16, McBrayer Arena
City/State Richmond, KY

No.	Marshall County Lady Marshals	Total FG		3-point		FT	FTA	Rebounds			F	TP	A	TO	BLK	STL	MIN	
		FG	FGA	FG	FGA			Off	Def	Tot								
12	Sarah Darnell	0	0	0	0	0	0	0	0	0	0	0	0	0	0	DNP		
14	* Tosha Gardner	5	11	2	5	2	2	1	1	2	0	14	3	3	0	2	27:32	
15	Jessica Smith	0	0	0	0	0	0	0	0	0	0	0	0	0	0	DNP		
21	Kala Morton	4	9	2	5	0	0	1	2	3	3	10	1	3	0	3	19:19	
22	* Emily Stone	1	2	0	1	0	0	0	0	0	5	2	7	4	0	1	29:54	
23	Missy Barrett	0	0	0	0	0	0	0	0	0	0	0	0	0	0	0	0:22	
24	Jennifer Riley	0	0	0	0	0	0	0	0	0	0	0	0	0	0	0	0:21	
30	Trista Fralix	0	0	0	0	0	0	0	0	0	0	0	0	0	0	0	DNP	
32	Destiny Hall	0	2	0	0	1	2	2	1	3	1	1	0	1	0	0	11:29	
33	Kristen Reeves	1	4	0	0	2	4	2	4	6	2	4	2	2	3	0	20:44	
34	Kristen Bailey	0	0	0	0	0	0	0	0	0	0	0	0	0	0	0	DNP	
41	* Kara Adair	1	2	0	0	0	0	1	0	1	0	2	0	1	0	0	5:59	
42	* Ashley Harper	2	5	0	0	0	0	1	1	2	1	4	0	2	0	0	15:06	
44	Krissi Nimmo	0	0	0	0	0	0	0	0	0	0	0	0	0	0	0	DNP	
45	* Leah Lineberry	6	17	0	0	1	4	0	2	2	3	13	0	0	1	1	29:14	
Team (Included in Totals)								2	1	3								
Totals		20	52	4	11	6	12	10	12	22	15	50	13	16	4	7	160	

Total FG%: 1st half 10 - 21 (47.6%) 2nd half 10 - 31 (32.3%) Game 20 - 52 (38.5%)
 3Pt FG%: 1st half 2 - 3 (66.7%) 2nd half 2 - 8 (25.0%) Game 4 - 11 (36.4%)
 FT%: 1st half 2 - 4 (50.0%) 2nd half 4 - 8 (50.0%) Game 6 - 12 (50.0%)

Deadball rebounds
5

No.	Jackson County Lady Generals	Total FG		3-point		FT	FTA	Rebounds			F	TP	A	TO	BLK	STL	MIN	
		FG	FGA	FG	FGA			Off	Def	Tot								
10	Dena Gentry	0	0	0	0	0	0	0	0	0	0	0	0	0	0	0	DNP	
11	* Andrea Whitehead	2	9	0	1	7	9	1	3	4	2	11	5	8	0	3	22:08	
12	* Shay Gabbard	5	7	1	3	0	0	1	1	2	0	11	1	0	0	0	22:27	
15	Whitney Moore	0	0	0	0	0	0	0	0	0	0	0	0	0	0	0	DNP	
20	Ashlee Gabbard	0	0	0	0	0	0	0	0	0	1	0	0	0	0	0	1:17	
21	Jessica Bowman	0	0	0	0	0	0	0	0	0	0	0	0	0	0	0	1:32	
22	* Leah Moore	3	5	2	3	2	2	1	2	3	1	10	3	0	0	0	24:37	
24	Jeannena Hignite	0	0	0	0	0	0	0	0	0	0	0	1	4	0	1	10:57	
25	Lauren Lunsford	0	0	0	0	0	0	0	0	0	0	0	0	0	0	0	DNP	
32	* Candice Rose	6	13	3	4	2	2	4	5	9	2	17	1	2	0	1	26:19	
33	Sarah Elliott	0	0	0	0	0	0	2	5	7	1	0	1	0	3	0	14:53	
34	Jenna Lakes	0	0	0	0	0	0	0	0	0	0	0	0	0	0	0	DNP	
40	* Tiffany Roaden	5	10	1	3	2	2	2	4	6	3	13	0	2	0	4	22:10	
42	Brittany Carr	0	2	0	0	0	0	1	0	1	1	0	0	2	0	0	4:35	
55	Keisha Combs	0	0	0	0	0	0	0	2	2	1	0	0	0	0	0	9:05	
Team (Included in Totals)								1	3	4								
Totals		21	46	7	14	13	15	13	25	38	12	62	12	19	3	9	160	

Total FG%: 1st half 11 - 23 (47.8%) 2nd half 10 - 23 (43.5%) Game 21 - 46 (45.7%)
 3Pt FG%: 1st half 5 - 6 (83.3%) 2nd half 2 - 8 (25.0%) Game 7 - 14 (50.0%)
 FT%: 1st half 2 - 2 (100%) 2nd half 11 - 13 (84.6%) Game 13 - 15 (86.7%)

Deadball rebounds
1

Technical Fouls: None

Attendance: 5,835

Officials: Charles Chappie, Richard Price, Larry Hammer

	Score by Period					Final	Record	Overall	Conf
	1st H	2nd H	OT	OT					
Jackson County Lady Generals	29	33	0	0	62	Lady Generals	30-5		
Marshall County Lady Marshals	24	26	0	0	50	Lady Marshals	31-2		

	Lady Generals	Lady Marshals		Lady Generals	Lady Marshals		Lady Generals	Lady Marshals
Points off Turnovers	18	10	Second Effort Points	16	11	Bench Points	0	15
Points in the Paint	20	14	3 Point Points	21	12	Free Throw Points	13	6
Largest Lead	44	27	Lead Changes	4		Number of Ties	3	

University of Kentucky Basketball - Play by Play Report - Period 1 (pg 1)
Jackson County Lady Generals vs. Marshall County Lady Marshals
Date: 03/22/2000 Time: 7:00 pm Site: Girls' Sweet 16, McBrayer Arena-Richmond, KY Attendance:

##	Name	Action	Action	Score	Clock	Diff	##	Name	Action	Action
11	A Whitehead	Start Game					14	T Gardner	Start Game	
12	S Gabbard	Start Game					22	E Stone	Start Game	
22	L Moore	Start Game					42	A Harper	Start Game	
32	C Rose	Start Game					41	K Adair	Start Game	
40	T Roaden	Start Game					45	L Lineberry	Start Game	
40	T Roaden	Jump Ball Loss			1 7:59		45	L Lineberry	Jump Ball Win	
					1 7:46		22	E Stone	Turn Over	(Bad Pass)
40	T Roaden	Steal			1 7:43					
40	T Roaden	FG Made	32 C Rose Assist	2-0	1 7:23	+2				
				2-2	1 6:57	(T1)	45	L Lineberry	FG Made	22 E Stone Assist
40	T Roaden	Turn Over			1 6:38					
11	A Whitehead	Layup Att			1 6:26		42	A Harper	Turn Over	
					1 6:21		45	L Lineberry	Def Rebound	
11	A Whitehead	FG Attempt		2-5	1 6:14	-3 (L1)	14	T Gardner	3Pt Made	22 E Stone Assist
22	L Moore	Personal Foul			1 5:55		45	L Lineberry	Def Rebound	
					1 5:29					
					1 5:29		41	K Adair	Leave Game	
					1 5:29		32	D Hall	Enter Game	for 42 A Harper
					1 5:20		33	K Reeves	Enter Game	
11	A Whitehead	Def Rebound			1 5:20		14	T Gardner	3Pt Attempt	
32	C Rose	3Pt Made	11 A Whitehead Assist	5-5	1 5:09	(T2)				
					1 4:42		45	L Lineberry	FG Attempt	32 D Hall Off Reb
					1 4:32	-2	14	T Gardner	FG Made	
40	T Roaden	FG Attempt	32 C Rose Off Reb	5-7	1 4:18					
32	C Rose	Putback Made		7-7	1 4:14	(T3)				
					1 3:59		32	D Hall	Turn Over	
11	A Whitehead	Steal			1 3:58					
12	S Gabbard	FG Made	11 A Whitehead Assist	9-7	1 3:58	+2 (L2)				
33	S Elliott	Enter Game	for 12 S Gabbard		1 3:58					
					1 3:43		22	E Stone	Turn Over	
40	T Roaden	Steal			1 3:42					
40	T Roaden	3Pt Made	11 A Whitehead Assist	12-7	1 3:36	+5				
					1 3:26		33	K Reeves	Turn Over	(Fumble)
42	B Carr	Enter Game	for 40 T Roaden		1 3:26					
42	B Carr	FG Attempt	42 B Carr Off Reb		1 3:12		33	K Reeves	Block	
42	B Carr	Turn Over	(Bad Pass)		1 2:55					
11	A Whitehead	Turn Over	(Bad Pass)	12-10	1 2:32	+2	14	T Gardner	3Pt Made	22 E Stone Assist
					1 2:17					
					1 2:14		45	L Lineberry	Steal	
55	K Combs	Enter Game	for 32 C Rose		1 1:56		14	T Gardner	Turn Over	(Traveling)
12	S Gabbard	Enter Game	for 22 L Moore		1 1:56					
					1 1:56					
11	A Whitehead	FG Attempt			1 1:38		32	D Hall	Def Rebound	
Lady Generals	Def Rebound				1 1:24		45	L Lineberry	FG Attempt	
11	A Whitehead	Turn Over	(Bad Pass)		1 1:11					
55	K Combs	Personal Foul			1 1:00					
					1 1:00		21	K Morton	Enter Game	for 14 T Gardner
					1 1:00		32	D Hall	FT Attempt	Lady Marshals Deadball Reb
				12-11	1 1:00	+1	32	D Hall	FT Made	
					1 1:00		42	A Harper	Enter Game	for 32 D Hall
					1 1:00		41	K Adair	Enter Game	for 22 E Stone
					1 0:46		33	K Reeves	Turn Over	(Traveling)
					1 0:46		14	T Gardner	Enter Game	for 41 K Adair
					1 0:26		Lady Marshals	Off Rebound		
33	S Elliott	Block	33 S Elliott Def Reb		1 0:26		14	T Gardner	FG Attempt	
42	B Carr	FG Attempt			1 0:20		33	K Reeves	Def Rebound	
55	K Combs	Def Rebound			1 0:07		14	T Gardner	FG Attempt	

End of Period Summary Lady Generals 12 Lady Marshals 11

Largest Lead: Lady Generals 12 Lady Marshals 7 (5 pts)
Lead in Period: Lady Generals 12 Lady Marshals 7 (5 pts)

Lead Changes: 2 Ties: 3
Lead Changes: 2 Ties: 3 (this period)

4 for 4 oppo pts
2 for 2 pts
5/11 for 45.5 %
0/0 for 0.00 %

Turnovers
2nd Chances
Field Goals
Free Throws

7 for 7 oppo pts
2 for 2 pts
4/9 for 44.4 %
1/2 for 50.0 %

University of Kentucky Basketball - Play by Play Report - Period 2 (pg 1)
Jackson County Lady Generals vs. Marshall County Lady Marshals
Date: 03/22/2000 Time: 7:00 pm Site: Girls' Sweet 16, McBrayer Arena-Richmond, KY Attendance:

##	Name	Action	Action	Score	Clock	Diff	##	Name	Action	Action	
11	A Whitehead	Leave Game			2 8:00						
12	S Gabbard	Leave Game			2 8:00						
32	C Rose	Leave Game			2 8:00						
42	B Carr	Leave Game			2 8:00						
11	A Whitehead	Enter Game	for 55 K Combs		2 8:00						
12	S Gabbard	Enter Game			2 8:00						
22	L Moore	Enter Game			2 8:00						
32	C Rose	Enter Game			2 8:00						
40	T Roaden	Enter Game			2 8:00						
					2 8:00		14	T Gardner	Leave Game		
					2 8:00		21	K Morton	Leave Game		
					2 8:00		33	K Reeves	Leave Game		
					2 8:00		42	A Harper	Leave Game		
					2 8:00		14	T Gardner	Enter Game	for 45 L Lineberry	
					2 8:00		22	E Stone	Enter Game		
					2 8:00		33	K Reeves	Enter Game		
					2 8:00		42	A Harper	Enter Game		
					2 8:00		45	L Lineberry	Enter Game		
					2 8:00		45	L Lineberry	FG Attempt		
40	T Roaden	Def Rebound			2 7:43		33	K Reeves	Personal Foul		
22	L Moore	FT Made		13-11	2 7:34	+2					
22	L Moore	FT Made		14-11	2 7:34	+3					
11	A Whitehead	Def Rebound			2 7:27		45	L Lineberry	FG Attempt		
32	C Rose	FG Attempt	32 C Rose Off Reb		2 7:19						
32	C Rose	Putback Att	Lady Generals Off Reb		2 7:15		33	K Reeves	Block		
12	S Gabbard	3Pt Made	22 L Moore Assist	17-11	2 7:05	+6					
					2 6:58		21	K Morton	Enter Game	for 42 A Harper	
40	T Roaden	Personal Foul			2 6:48						
					2 6:48		45	L Lineberry	FT Attempt	Lady Marshals Deadball Reb	
					17-12	2 6:48	+5	45	L Lineberry	FT Made	
32	C Rose	FG Attempt			2 6:36		33	K Reeves	Def Rebound		
					17-14	2 6:18	+3	14	T Gardner	FG Made	33 K Reeves Assist
11	A Whitehead	Turn Over	(Bad Pass)		2 6:11						
32	C Rose	Def Rebound			2 6:03		33	K Reeves	FG Attempt		
40	T Roaden	Enter Game	for 33 S Elliott		2 5:40						
40	T Roaden	Turn Over	(Bad Pass)		2 5:40						
11	A Whitehead	Personal Foul			2 5:40						
24	J Hignite	Enter Game	for 11 A Whitehead		2 5:40						
					17-16	2 5:34	+1	45	L Lineberry	FG Made	22 E Stone Assist
24	J Hignite	Turn Over			2 5:20						
					2 5:19		21	K Morton	Steal		
					17-18	2 5:15	-1 (L3)	22	E Stone	Layup Made	21 K Morton Assist
					2 5:00		45	L Lineberry	Personal Foul		
32	C Rose	3Pt Made	22 L Moore Assist	20-18	2 4:54	+2 (L4)					
32	C Rose	Def Rebound			2 4:35		33	K Reeves	FG Attempt		
					2 4:19		22	E Stone	Personal Foul		
55	K Combs	Enter Game	for 12 S Gabbard		2 4:19						
					2 4:19		42	A Harper	Enter Game	for 33 K Reeves	
33	S Elliott	Enter Game	for 40 T Roaden		2 4:19						
32	C Rose	FG Attempt	33 S Elliott Off Reb		2 4:09						
24	J Hignite	Turn Over			2 3:58						
					2 3:53		14	T Gardner	Turn Over		
24	J Hignite	Steal			2 3:51						
22	L Moore	3Pt Made	24 J Hignite Assist	23-18	2 3:45	+5					
					23-20	2 3:31	+3	42	A Harper	FG Made	
22	L Moore	FG Attempt	33 S Elliott Off Reb		2 3:12						
22	L Moore	FG Made	33 S Elliott Assist	25-20	2 3:08	+5					
					25-22	2 2:51	+3	21	K Morton	FG Made	22 E Stone Assist
					2 2:37		45	L Lineberry	Personal Foul		
11	A Whitehead	Enter Game	for 22 L Moore		2 2:37						
					2 2:37						
					2 2:37		32	D Hall	Enter Game	for 14 T Gardner	
					2 2:37		33	K Reeves	Enter Game	for 45 L Lineberry	
40	T Roaden	Enter Game	for 32 C Rose		2 2:36						
					25-24	2 2:22	+1	42	A Harper	FG Made	
40	T Roaden	FG Made			27-24	2 2:06	+3				
Lady Generals	Def Rebound				2 1:49		32	D Hall	FG Attempt		

University of Kentucky Basketball - Play by Play Report - Period 2 (pg 2)
Jackson County Lady Generals vs. Marshall County Lady Marshals
Date: 03/22/2000 Time: 7:00 pm Site: Girls' Sweet 16, McBrayer Arena-Richmond, KY Attendance:

## Name	Action	Action	Score	Clock	Diff	## Name	Action	Action
11 A Whitehead	Turn Over	(Bad Pass)		2 1:46		45 L Lineberry	Enter Game	for 33 K Reeves
				2 1:36				
11 A Whitehead	Personal Foul			2 1:32		21 K Morton	Steal	
21 J Bowman	Enter Game	for 11 A Whitehead		2 1:32				
				2 1:23		21 K Morton	Turn Over	(Bad Pass)
40 T Roaden	Steal			2 1:20				
40 T Roaden	FG Made		29-24	2 1:12	+5			
33 S Elliott	Def Rebound			2 0:44		42 A Harper	FG Attempt	
				2 0:23		21 K Morton	Personal Foul	
				2 0:23		14 T Gardner	Enter Game	for 21 K Morton
12 S Gabbard	Enter Game	for 33 S Elliott		2 0:23				
12 S Gabbard	3Pt Attempt			2 0:05		42 A Harper	Def Rebound	

OFFICIAL NCAA BASKETBALL BOX SCORE
Marshall County Lady Marshals vs Jackson County Lady Generals

03/22/2000 7:00 pm
1st Half Box Score

Arena Girls' Sweet 16, McBrayer Arena
City, State Richmond, KY

No.	Marshall County Lady Marshals	Total FG		3-point		FT	FTA	Rebounds			F	TP	A	TO	BLK	STL	MIN
		FG	FGA	FG	FGA			Off	Def	Tot							
12	Sarah Darnell	0	0	0	0	0	0	0	0	0	0	0	0	0	0	DNP	
14	* Tosha Gardner	4	7	2	3	0	0	0	0	0	0	0	10	0	0	13:32	
15	Jessica Smith	0	0	0	0	0	0	0	0	0	0	0	0	0	0	DNP	
21	Kala Morton	1	1	0	0	0	0	0	0	0	1	2	1	1	0	7:35	
22	* Emily Stone	1	1	0	0	0	0	0	0	0	1	2	5	2	0	15:00	
23	Missy Barrett	0	0	0	0	0	0	0	0	0	0	0	0	0	0	DNP	
24	Jennifer Riley	0	0	0	0	0	0	0	0	0	0	0	0	0	0	DNP	
30	Trista Fralicx	0	0	0	0	0	0	0	0	0	0	0	0	0	0	DNP	
32	Destiny Hall	0	1	0	0	1	2	1	1	2	0	1	0	1	0	7:06	
33	Kristen Reeves	0	2	0	0	0	0	0	2	2	1	0	1	2	2	10:01	
34	Kristen Bailey	0	0	0	0	0	0	0	0	0	0	0	0	0	0	DNP	
41	* Kara Adair	0	0	0	0	0	0	0	0	0	0	0	0	0	0	2:45	
42	* Ashley Harper	2	3	0	0	0	0	0	1	1	0	4	0	1	0	8:52	
44	Krissi Nimmo	0	0	0	0	0	0	0	0	0	0	0	0	0	0	DNP	
45	* Leah Lineberry	2	6	0	0	1	2	0	2	2	2	5	0	0	0	15:09	
Team (Included in Totals)								1	0	1							
Totals		10	21	2	3	2	4	2	6	8	5	24	7	9	2	3	80

Total FG%: 1st half 10 - 21 (47.6%) 2nd half 0 - 0 (0.00%) Game 10 - 21 (47.6%)
 3Pt FG%: 1st half 2 - 3 (66.7%) 2nd half 0 - 0 (0.00%) Game 2 - 3 (66.7%)
 FT%: 1st half 2 - 4 (50.0%) 2nd half 0 - 0 (0.00%) Game 2 - 4 (50.0%)

Deadball
rebounds
2

No.	Jackson County Lady Generals	Total FG		3-point		FT	FTA	Rebounds			F	TP	A	TO	BLK	STL	MIN
		FG	FGA	FG	FGA			Off	Def	Tot							
10	Dena Gentry	0	0	0	0	0	0	0	0	0	0	0	0	0	0	DNP	
11	* Andrea Whitehead	0	3	0	0	0	0	0	2	2	2	0	3	4	0	1	11:25
12	* Shay Gabbard	2	3	1	2	0	0	0	0	0	0	5	0	0	0	10:02	
15	Whitney Moore	0	0	0	0	0	0	0	0	0	0	0	0	0	0	DNP	
20	Ashlee Gabbard	0	0	0	0	0	0	0	0	0	0	0	0	0	0	DNP	
21	Jessica Bowman	0	0	0	0	0	0	0	0	0	0	0	0	0	0	1:32	
22	* Leah Moore	2	3	1	1	2	2	0	0	0	1	7	2	0	0	11:27	
24	Jeannena Hignite	0	0	0	0	0	0	0	0	0	0	0	1	2	0	1	5:40
25	Lauren Lunsford	0	0	0	0	0	0	0	0	0	0	0	0	0	0	DNP	
32	* Candice Rose	3	7	2	2	0	0	2	2	4	0	8	1	0	0	0	11:28
33	Sarah Elliott	0	0	0	0	0	0	2	2	4	0	0	1	0	1	0	10:14
34	Jenna Lakes	0	0	0	0	0	0	0	0	0	0	0	0	0	0	DNP	
40	* Tiffany Roaden	4	5	1	1	0	0	0	1	1	1	9	0	2	0	3	8:31
42	Brittany Carr	0	2	0	0	0	0	1	0	1	0	0	0	1	0	0	3:26
55	Keisha Combs	0	0	0	0	0	0	0	1	1	1	0	0	0	0	0	6:15
Team (Included in Totals)								1	2	3							
Totals		11	23	5	6	2	2	6	10	16	5	29	8	9	1	5	80

Total FG%: 1st half 11 - 23 (47.8%) 2nd half 0 - 0 (0.00%) Game 11 - 23 (47.8%)
 3Pt FG%: 1st half 5 - 6 (83.3%) 2nd half 0 - 0 (0.00%) Game 5 - 6 (83.3%)
 FT%: 1st half 2 - 2 (100%) 2nd half 0 - 0 (0.00%) Game 2 - 2 (100%)

Deadball
rebounds
0

Technical Fouls: None

Attendance: Unknown

Officials: Charles Chappie, Richard Price, Larry Hammer

Score by Period	1st H	2nd H	Final	Record	Overall	Conf
Jackson County Lady Generals	29	0	29	Lady Generals	29-5	
Marshall County Lady Marshals	24	0	24	Lady Marshals	31-1	

	Lady Generals	Lady Marshals		Lady Generals	Lady Marshals		Lady Generals	Lady Marshals
Points off Turnovers	12	8	Second Effort Points	7	2	Bench Points	0	3
Points in the Paint	8	4	3 Point Points	15	6	Free Throw Points	2	2
Largest Lead	17	11	(6 pts) Lead Changes	4		Number of Ties	3	

University of Kentucky Basketball - Play by Play Report - Period 3 (pg 1)
Jackson County Lady Generals vs. Marshall County Lady Marshals
Date: 03/22/2000 Time: 7:00 pm Site: Girls' Sweet 16, McBrayer Arena-Richmond, KY Attendance: 5,835

##	Name	Action	Action	Score	Clock	Diff	##	Name	Action	Action	
12	S Gabbard	Leave Game			3 8:00						
21	J Bowman	Leave Game			3 8:00						
24	J Hignite	Leave Game			3 8:00						
40	T Roaden	Leave Game			3 8:00						
55	K Combs	Leave Game			3 8:00						
					3 8:00		14	T Gardner	Leave Game		
					3 8:00		22	E Stone	Leave Game		
					3 8:00		32	D Hall	Leave Game		
					3 8:00		42	A Harper	Leave Game		
					3 8:00		14	T Gardner	Enter Game	for 45 L Lineberry	
					3 8:00		22	E Stone	Enter Game		
					3 8:00		42	A Harper	Enter Game		
					3 8:00		41	K Adair	Enter Game		
					3 8:00		45	L Lineberry	Enter Game		
					3 8:00						
12	S Gabbard	Enter Game			3 8:00						
22	L Moore	Enter Game			3 8:00						
32	C Rose	Enter Game			3 8:00						
40	T Roaden	Enter Game			3 8:00						
11	A Whitehead	Enter Game			3 8:00						
	Lady Generals	Turn Over	(5 Sec Violation)		3 7:51						
					3 7:47		22	E Stone	Turn Over		
11	A Whitehead	Steal			3 7:46						
11	A Whitehead	FG Attempt	12 S Gabbard Off Reb		3 7:45						
12	S Gabbard	Putback Made		31-24	3 7:43	+7					
32	C Rose	Def Rebound			3 7:28		41	K Adair	FG Attempt		
32	C Rose	FT Made		32-24	3 7:05	+8	42	A Harper	Personal Foul		
32	C Rose	FT Made		33-24	3 7:05	+9					
40	T Roaden	Def Rebound			3 6:56		45	L Lineberry	FG Attempt		
12	S Gabbard	FG Made		35-24	3 6:43	+11					
					3 6:31		41	K Adair	Turn Over	(Traveling)	
					3 6:31		33	K Reeves	Enter Game	for 42 A Harper	
					3 6:31		32	D Hall	Enter Game	for 41 K Adair	
					3 6:31			Lady Marshals	20 Sec Time Out		
11	A Whitehead	FG Attempt			3 6:27			Lady Marshals	Def Rebound	(Dead Ball Reb)	
32	C Rose	Personal Foul			3 6:25						
					3 6:23		14	T Gardner	Turn Over	(Bad Pass)	
32	C Rose	Steal			3 6:20						
40	T Roaden	3Pt Attempt			3 6:16		14	T Gardner	Def Rebound		
					3 5:59		45	L Lineberry	FG Attempt	32 D Hall Off Reb	
11	A Whitehead	Def Rebound			3 5:58		32	D Hall	Putback Att		
12	S Gabbard	Layup Made	11 A Whitehead Assist	37-24	3 5:48	+13					
					37-26	3 5:37	+11	45	L Lineberry	FG Made	14 T Gardner Assist
32	C Rose	FG Made	22 L Moore Assist	39-26	3 5:23	+13					
32	C Rose	Personal Foul			3 5:17						
42	B Carr	Enter Game	for 22 L Moore		3 5:17						
11	A Whitehead	Leave Game			3 5:17						
32	C Rose	Leave Game			3 5:17						
22	L Moore	Enter Game	for 40 T Roaden		3 5:17						
24	J Hignite	Enter Game			3 5:17						
33	S Elliott	Enter Game			3 5:17						
					3 5:17			Lady Marshals	20 Sec Time Out		
42	B Carr	Personal Foul			3 4:59						
					3 4:59		21	K Morton	Enter Game	for 32 D Hall	
					39-27	3 4:59	+12	33	K Reeves	FT Made	
33	S Elliott	Def Rebound			3 4:59		33	K Reeves	FT Attempt		
12	S Gabbard	3Pt Attempt			3 4:42		33	K Reeves	Def Rebound		
12	S Gabbard	Def Rebound			3 4:29		21	K Morton	FG Attempt		
42	B Carr	Turn Over			3 4:08						
22	L Moore	Leave Game			3 4:08						
32	C Rose	Enter Game	for 42 B Carr		3 4:08						
55	K Combs	Enter Game			3 4:08						
33	S Elliott	Block			3 3:58		45	L Lineberry	FG Attempt	Lady Marshals Off Reb	
55	K Combs	Def Rebound			3 3:42		14	T Gardner	3Pt Attempt		
					3 3:39		33	K Reeves	Personal Foul		
24	J Hignite	Turn Over			3 3:37						
32	C Rose	Def Rebound			3 3:29		22	E Stone	3Pt Attempt		

University of Kentucky Basketball - Play by Play Report - Period 3 (pg 2)

Jackson County Lady Generals vs. Marshall County Lady Marshals

Date: 03/22/2000 Time: 7:00 pm Site: Girls' Sweet 16, McBrayer Arena-Richmond, KY Attendance: 5,835

##	Name	Action	Action	Score	Clock	Diff	##	Name	Action	Action
32	C Rose	FG Made		41-27	3 3:16	+14				
33	S Elliott	Block	33 S Elliott Def Reb		3 3:03		21	K Morton	FG Attempt	
32	C Rose	Turn Over			3 2:56		21	K Morton	Steal	
					3 2:56					
40	T Roaden	Enter Game	for 12 S Gabbard		3 2:56					
33	S Elliott	Def Rebound			3 2:47		45	L Lineberry	FG Attempt	
24	J Hignite	Turn Over			3 2:20		22	E Stone	Steal	
					3 2:20		42	A Harper	Enter Game	for 33 K Reeves
Lady Generals		Def Rebound			3 1:55		45	L Lineberry	FG Attempt	
32	C Rose	Turn Over			3 1:40		14	T Gardner	Steal	
					3 1:27		42	A Harper	FG Attempt	42 A Harper Off Reb
					3 1:21		45	L Lineberry	FG Attempt	14 T Gardner Off Reb
33	S Elliott	Personal Foul			3 1:18					
33	S Elliott	Leave Game			3 1:18					
20	A Gabbard	Enter Game	for 55 K Combs		3 1:18					
22	L Moore	Enter Game			3 1:18					
					3 1:18		33	K Reeves	Enter Game	for 14 T Gardner
32	C Rose	Def Rebound			3 1:18		45	L Lineberry	FT Attempt	Lady Marshals Deadball Reb
32	C Rose	3Pt Attempt			3 1:05		45	L Lineberry	FT Attempt	
					3 0:59		21	K Morton	Def Rebound	
32	C Rose	FG Attempt			3 0:59		32	D Hall	Enter Game	for 45 L Lineberry
					3 0:53		21	K Morton	Turn Over	
32	C Rose	3Pt Made		44-27	3 0:48	+17	21	K Morton	Def Rebound	
					3 0:44		42	A Harper	Turn Over	(Traveling)
20	A Gabbard	Personal Foul			3 0:30		21	K Morton	3Pt Attempt	33 K Reeves Off Reb
40	T Roaden	3Pt Attempt	22 L Moore Off Reb	44-30	3 0:28	+14	21	K Morton	3Pt Made	22 E Stone Assist
33	S Elliott	Enter Game	for 20 A Gabbard		3 0:07		23	M Barrett	Enter Game	for 32 D Hall

End of Period Summary Lady Generals 44 Lady Marshals 30

Largest Lead: Lady Generals 44 Lady Marshals 27 (17 pts)
Lead in Period: Lady Generals 44 Lady Marshals 27 (17 pts)

6 for 0 oppo pts
2 for 2 pts
6/13 for 46.2 %
2/2 for 100 %

Turnovers
2nd Chances
Field Goals
Free Throws

Lead Changes: 4 Ties: 3
Lead Changes: 0 Ties: 0 (this period)
5 for 5 oppo pts
5 for 3 pts
2/16 for 12.5 %
1/4 for 25.0 %

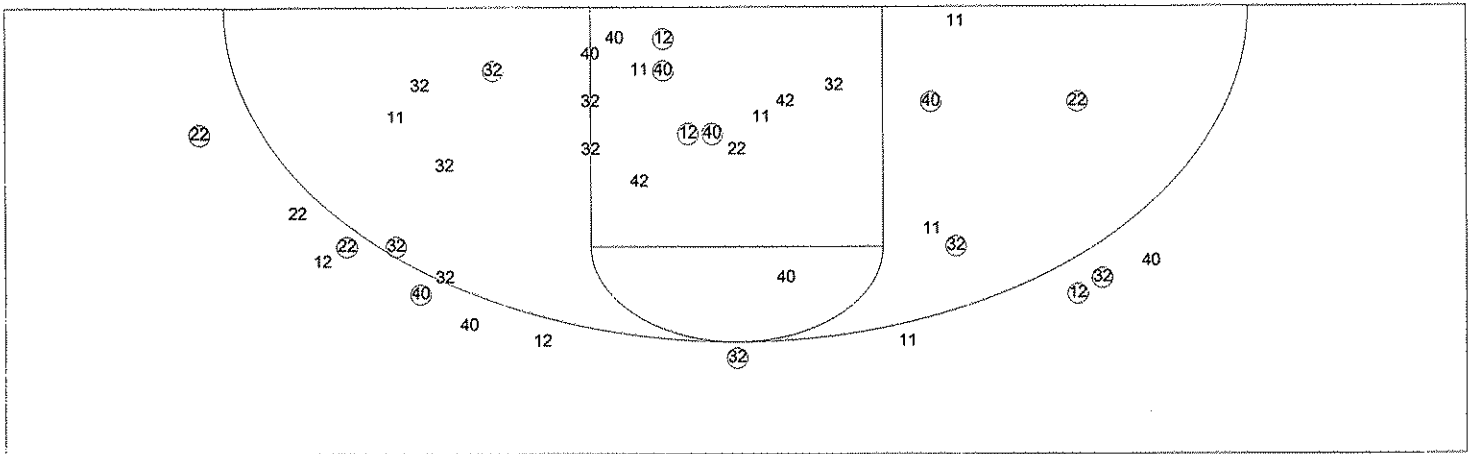
University of Kentucky Basketball - Play by Play Report - Period 4 (pg 1)
Jackson County Lady Generals vs. Marshall County Lady Marshals
Date: 03/22/2000 Time: 7:00 pm Site: Girls' Sweet 16, McBrayer Arena-Richmond, KY Attendance: 5,835

##	Name	Action	Action	Score	Clock	Diff	##	Name	Action	Action
22	L Moore	Leave Game			4 8:00					
24	J Hignite	Leave Game			4 8:00					
32	C Rose	Leave Game			4 8:00					
33	S Elliott	Leave Game			4 8:00					
11	A Whitehead	Enter Game	for 40 T Roaden		4 8:00					
12	S Gabbard	Enter Game			4 8:00					
22	L Moore	Enter Game			4 8:00					
32	C Rose	Enter Game			4 8:00					
40	T Roaden	Enter Game			4 8:00					
					4 8:00		21	K Morton	Leave Game	
					4 8:00		22	E Stone	Leave Game	
					4 8:00		23	M Barrett	Leave Game	
					4 8:00		33	K Reeves	Leave Game	
					4 8:00		14	T Gardner	Enter Game	for 42 A Harper
					4 8:00		22	E Stone	Enter Game	
					4 8:00		21	K Morton	Enter Game	
					4 8:00		33	K Reeves	Enter Game	
					4 8:00		45	L Lineberry	Enter Game	
					4 7:41		14	T Gardner	3Pt Attempt	21 K Morton Off Reb
				44-32	4 7:40	+12	21	K Morton	Putback Made	
					4 7:20					
22	L Moore	3Pt Attempt	32 C Rose Off Reb		4 7:15					
11	A Whitehead	3Pt Attempt	11 A Whitehead Off Reb		4 7:13		45	L Lineberry	Block	
11	A Whitehead	FG Attempt	32 C Rose Off Reb		4 7:07	+15				
22	L Moore	3Pt Made	12 S Gabbard Assist	47-32	4 7:07	+15				
				47-34	4 6:49	+13	45	L Lineberry	FG Made	33 K Reeves Assist
					4 6:45			Lady Marshals	Time Out	
40	T Roaden	Layup Made	11 A Whitehead Assist	49-34	4 6:37	+15				
				49-36	4 6:25	+13	14	T Gardner	FG Made	
32	C Rose	FG Attempt			4 6:13			Lady Marshals	Def Rebound	
					4 6:05		45	L Lineberry	FG Attempt	33 K Reeves Off Reb
				49-38	4 6:02	+11	33	K Reeves	Putback Made	
					4 5:55		21	K Morton	Personal Foul	
11	A Whitehead	Layup Made		51-38	4 5:42	+13				
				51-40	4 5:27	+11	45	L Lineberry	FG Made	14 T Gardner Assist
11	A Whitehead	Turn Over	(Bad Pass)		4 5:20					
Lady Generals	20 Sec Time Out				4 5:20					
40	T Roaden	Steal			4 5:10		22	E Stone	Turn Over	(Bad Pass)
					4 5:08					
11	A Whitehead	FT Attempt	Lady Generals Deadball Reb		4 5:01		22	E Stone	Personal Foul	
11	A Whitehead	FT Made		52-40	4 5:01	+12				
				52-42	4 4:47	+10	42	A Harper	Enter Game	for 33 K Reeves
					4 4:35		45	L Lineberry	FG Made	14 T Gardner Assist
					4 4:35		45	L Lineberry	Personal Foul	
					4 4:35		32	D Hall	Enter Game	for 45 L Lineberry
11	A Whitehead	Turn Over	(5 Sec Violation)		4 4:09					
					4 3:56		21	K Morton	Turn Over	(Bad Pass)
11	A Whitehead	Steal			4 3:54					
11	A Whitehead	Turn Over	(Bad Pass)		4 3:44					
					4 3:41		14	T Gardner	Steal	
40	T Roaden	Personal Foul			4 3:39					
					4 3:39		45	L Lineberry	Enter Game	for 21 K Morton
				52-43	4 3:39	+9	14	T Gardner	FT Made	
				52-44	4 3:39	+8	14	T Gardner	FT Made	
					4 3:00					
Lady Generals	20 Sec Time Out				4 3:00					
					4 3:00		14	T Gardner	Leave Game	
					4 3:00		21	K Morton	Enter Game	for 42 A Harper
					4 3:00		33	K Reeves	Enter Game	
40	T Roaden	FG Attempt	40 T Roaden Off Reb		4 2:45					
					4 2:42		32	D Hall	Personal Foul	
					4 2:42		14	T Gardner	Enter Game	for 32 D Hall
40	T Roaden	FT Made		53-44	4 2:42	+9				
40	T Roaden	FT Made		54-44	4 2:42	+10				
					4 2:42					
33	S Elliott	Enter Game	for 12 S Gabbard		4 2:42					

University of Kentucky Basketball - Play by Play Report - Period 4 (pg 2)
Jackson County Lady Generals vs. Marshall County Lady Marshals
Date: 03/22/2000 Time: 7:00 pm Site: Girls' Sweet 16, McBrayer Arena-Richmond, KY Attendance: 5,835

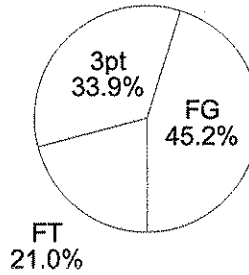
## Name	Action	Action	Score	Clock	Diff	## Name	Action	Action
22 L Moore	Def Rebound			4 2:29		21 K Morton	3Pt Attempt	
40 T Roaden	FG Attempt	40 T Roaden Off Reb		4 2:15		33 K Reeves	Block	
				4 2:03		22 E Stone	Personal Foul	
12 S Gabbard	Enter Game	for 33 S Elliott		4 2:03				
11 A Whitehead	FT Made		55-44	4 2:03	+11			
11 A Whitehead	FT Made		56-44	4 2:03	+12			
			56-47	4 1:51	+9	21 K Morton	3Pt Made	22 E Stone Assist
				4 1:45		22 E Stone	Personal Foul	
				4 1:45		42 A Harper	Enter Game	for 33 K Reeves
				4 1:45		41 K Adair	Enter Game	for 14 T Gardner
11 A Whitehead	FT Made		57-47	4 1:45	+10			
11 A Whitehead	FT Made		58-47	4 1:45	+11			
40 T Roaden	Def Rebound			4 1:28		42 A Harper	FG Attempt	
				4 1:21		21 K Morton	Personal Foul	
				4 1:21		14 T Gardner	Enter Game	for 21 K Morton
				4 1:21		33 K Reeves	Enter Game	for 42 A Harper
11 A Whitehead	FT Attempt			4 1:21		33 K Reeves	Def Rebound	
22 L Moore	Def Rebound			4 1:13		14 T Gardner	FG Attempt	
				4 1:06		22 E Stone	Personal Foul	
				4 1:06		21 K Morton	Enter Game	for 22 E Stone
11 A Whitehead	FT Made		59-47	4 1:06	+12			
11 A Whitehead	FT Made		60-47	4 1:06	+13			
40 T Roaden	Personal Foul			4 0:58				
				4 0:58		33 K Reeves	FT Attempt	Lady Marshals Deadball Reb
				4 0:58	+12	33 K Reeves	FT Made	
11 A Whitehead	Turn Over			4 0:50				
40 T Roaden	Def Rebound			4 0:43		33 K Reeves	FG Attempt	
11 A Whitehead	Layup Made		62-48	4 0:36	+14			
				4 0:28		21 K Morton	3Pt Attempt	41 K Adair Off Reb
				4 0:26	+12	41 K Adair	Putback Made	
				4 0:21		Lady Marshals	Time Out	
				4 0:21		24 J Riley	Enter Game	for 21 K Morton
				4 0:21		14 T Gardner	Leave Game	
				4 0:21		24 J Riley	Leave Game	
				4 0:21		33 K Reeves	Leave Game	
				4 0:21		41 K Adair	Leave Game	
				4 0:21		14 T Gardner	Enter Game	for 45 L Lineberry
				4 0:21		24 J Riley	Enter Game	
				4 0:21		23 M Barrett	Enter Game	
				4 0:21		41 K Adair	Enter Game	
				4 0:21		45 L Lineberry	Enter Game	

University of Kentucky Basketball - TEAM SHOT CHART for the Lady Generals
 Jackson County Lady Generals vs. Marshall County Lady Marshals
 DATE: 03/22/2000 TIME: 7:00 pm SITE: Girls' Sweet 16, McBrayer Arena-Richmond, KY

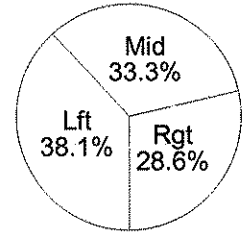


Shot Summary	M/A	%	PTS
3Pt FG	7/14	50.0%	21
2Pt FG	14/32	43.8%	28
Layups - L	3/3	100.0%	6
Layups - R	1/2	50.0%	2
Dunks	0/0	0.0%	0
Putbacks	2/3	66.7%	4
Overall Shooting	21/46	45.7%	49
Free Throws	13/15	86.7%	13
Total Points			62

Scoring Distribution

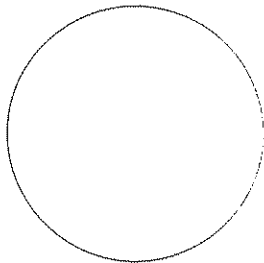


Scoring Locations

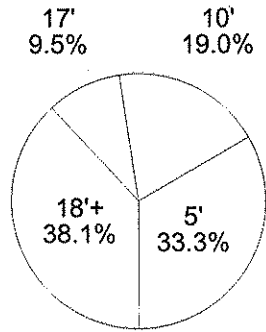


By Period	FG	FGA	FG%	3Pt	3PA	3P%	FT	FTA	FT%	PTS	ORB	DRB	TR	Pf	AST	TO	BS	ST	P/S
1st Period	5	11	45.5	2	2	100.0	0	0	0.00	12	2	4	6	2	4	4	1	3	1.09
2nd Period	6	12	50.0	3	4	75.0	2	2	100	17	4	6	10	3	4	5	0	2	1.31
3rd Period	6	13	46.2	1	5	20.0	2	2	100	15	2	11	13	6	2	6	2	2	1.07
4th Period	4	10	40.0	1	3	33.3	9	11	81.8	18	5	4	9	2	2	4	0	2	1.20
Game	21	46	45.7	7	14	50.0	13	15	86.7	62	13	25	38	13	12	19	3	9	1.17

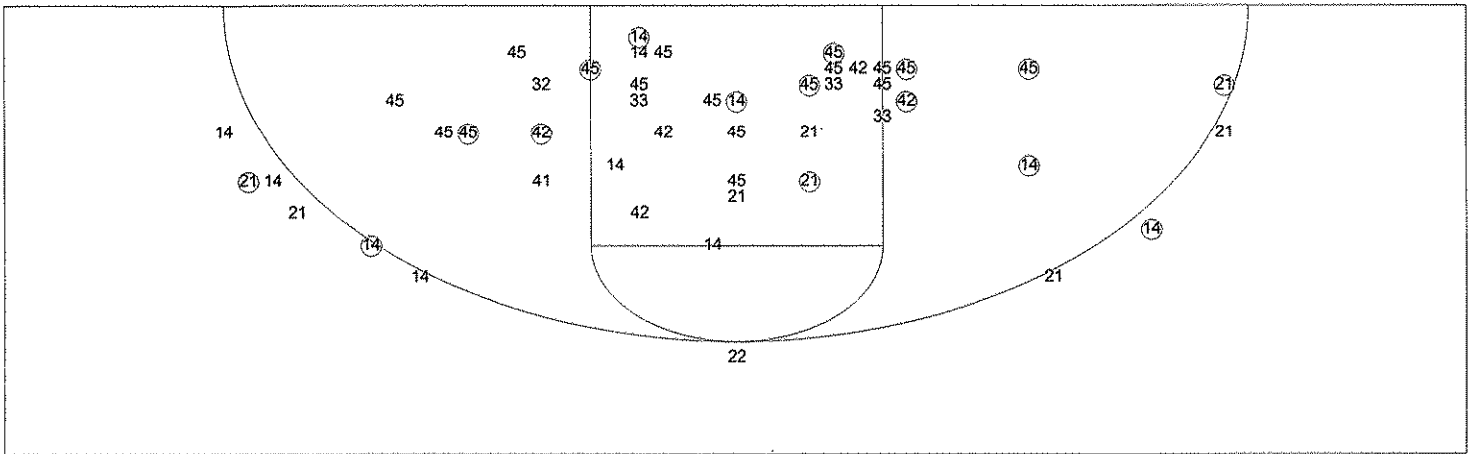
Scoring Breakdown



Scoring Range

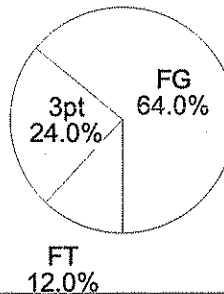


University of Kentucky Basketball - TEAM SHOT CHART for the Lady Marshals
 Jackson County Lady Generals vs. Marshall County Lady Marshals
 DATE: 03/22/2000 TIME: 7:00 pm SITE: Girls' Sweet 16, McBrayer Arena-Richmond, KY

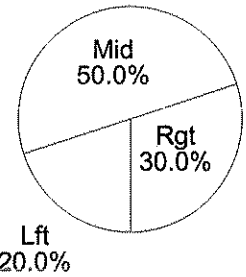


Shot Summary	M/A	%	PTS
3Pt FG	4/11	36.4%	12
2Pt FG	16/41	39.0%	32
Layups - L	0/0	0.0%	0
Layups - R	1/1	100.0%	2
Dunks	0/0	0.0%	0
Putbacks	3/4	75.0%	6
Overall Shooting	20/52	38.5%	44
Free Throws	6/12	50.0%	6
Total Points			50

Scoring Distribution

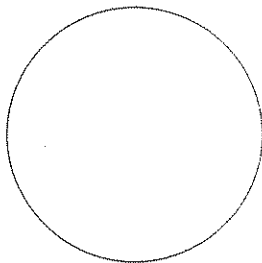


Scoring Locations



By Period	FG	FGA	FG%	3Pt	3PA	3P%	FT	FTA	FT%	PTS	ORB	DRB	TR	PF	AST	TO	BS	ST	P/S
1st Period	4	9	44.4	2	3	66.7	1	2	50.0	11	2	4	6	0	3	7	1	1	1.10
2nd Period	6	12	50.0	0	0	0.00	1	2	50.0	13	0	2	2	5	4	2	1	2	1.00
3rd Period	2	16	12.5	1	4	25.0	1	4	25.0	6	5	4	9	1	2	5	0	3	0.33
4th Period	8	15	53.3	1	4	25.0	3	4	75.0	20	3	2	5	8	4	2	2	1	1.18
Game	20	52	38.5	4	11	36.4	6	12	50.0	50	10	12	22	14	13	16	4	7	0.86

Scoring Breakdown



Scoring Range

